

Motic®

MORE THAN MICROSCOPY



EDU

SWIFTLINE

SELECT RANGE OF VERSATILE MICROSCOPES
FOR THE EDUCATIONAL FIELD



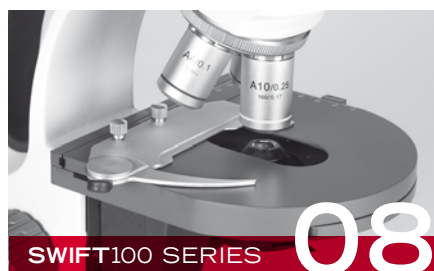


▼ CATALOGUE CONTENTS



SWIFT3H SERIES

SWIFT3H-M
SWIFT3H-B



SWIFT100 SERIES

SWIFT100
SWIFT120
SWIFT120 DIGITAL
SWIFT132



SWIFT200 SERIES

SWIFT220
SWIFT223

Motic® | SWIFTLINE

After seeing the staggering success of our Red Line, we are excited to introduce our select range, the Swift Line, designed to meet the ever-increasing, challenging needs of teachers and students.

Through innovation and design, as well as quality workmanship, the Swift Line offers high quality microscopes that meet customer's needs. The Swift Line includes durable microscopes for classroom use with student-proof features, a versatile hybrid microscope and a basic microscope with integrated Wi-Fi camera that will make your lessons interactive and enjoyable.

Our constant commitment to enduring quality and technical excellence ensures that you are getting the best product for your application.



Our 10-Year Limited Warranty guarantees that every product is free of defects in materials or workmanship, making it a solid investment that will pay off with years of hassle-free and effective work.

Your Motic Europe Team



SWIFT30 SERIES

SWIFT30-B
SWIFT30-S
SWIFT39-Z



DIGITAL SOLUTIONS

SWIFT130-X WI-FI
MOTICAM SERIES



ACCESSORIES

22

SWIFT3H SERIES



SWIFT3H-M



SWIFT3H-B



SWIFT3HYBRID^{SERIES}

THE SWIFT3H HYBRID MODELS PROVIDE A BROAD RANGE OF POSSIBILITIES, MAKING THIS SERIES ONE-OF-A-KIND

The SWIFT3H Series consists of versatile hybrid microscopes that combine two microscopes in one, making it one of a kind! By using the compound objectives (4X, 10X, and 40X) you can view microscopic specimens, and by using the 1X macro objective you can observe macroscopic specimens. This is done effortlessly by simply choosing the appropriate objective, adjusting the stage's position and selecting incident illumination (life specimen cup is also provided as an additional option).

If this is not sufficient, you should also know that the tripod base can be dismounted either to attach it on a standard camera tripod, or to take it with you on a field trip. It is cordless, using energy-efficient, rechargeable LED illumination, made of metal and compact so it is ideal for both classroom and field work applications.

UNIQUE MICRO-MACRO DESIGN

VERSATILE, IDEAL FOR CLASSROOM OR FIELD USE

ENERGY-EFFICIENT LED ILLUMINATION

MAGNIFICATION DISPLAY



See for yourself how simple it is to get the most out of our SWIFT3H Series! www.youtube.com/moticeurope

SWIFT3H SERIES MODELS
SWIFT3H-M | SWIFT3H-B



MAIN DIFFERENCES

OBSERVATION TUBE

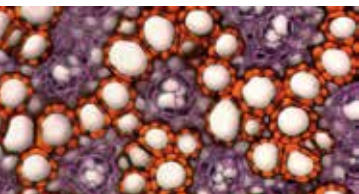
Monocular
Binocular Siedentopf type

SWIFT3H-M

SWIFT3H-B

•

•



SWIFT3H SERIES

SPECIFICATIONS



Main differences between models

SWIFT3H-M

SWIFT3H-B

Optical System		
Finite optical system, 160mm	●	●
Observation Tube		
Monocular	●	
Binocular Siedentopf type		●
Inclination		
30° inclined, 360° rotating	●	●
Interpupillary distance		
55-75mm		●
Diopter adjustment		
On the left tube, +/- 5 diopter		●
Eyepieces		
WF10X/18mm, lockable	●	●
Nosepiece		
Quadruple revolving nosepiece with click stops	●	●
Achromatic Objectives (DIN) - Lockable		
1X/0.02 Macro, 4X/0.10, 10X/0.25, 40X/0.65	●	●
Stage (3 interchangeable options, adjustable position)		
· Gliding stage with “one-touch” sample holder for micro observation		
· Black and white stage plates	●	●
· Live specimen cup with lid for macro observation		
Stage size		
∅ 98mm	●	●
Condenser		
Built-in 0,65 N.A. with iris diaphragm and frosted filter	●	●
Focus mechanism		
Coaxial coarse and fine focusing system	●	●
Minimum Fine focus precision		
2 µm	●	●
Z-axis movement		
15mm	●	●
Illumination		
Rechargeable incident and transmitted LED illumination, 20mA, 3.5V, 70mW with intensity control	●	●

SWIFT100 SERIES



SWIFT100



SWIFT120



SWIFT120 DIGITAL



SWIFT132

SWIFT100 SERIES

THE SWIFT100 SERIES IS THE IDEAL RANGE FOR HIGH SCHOOL EDUCATION, THANKS TO ITS STUDENT-PROOF DESIGN

The SWIFT100 Series stands out for its innovation, quality, and student-proof features, offering a wide range of microscopes for educational purposes in high schools up to advanced high school biology.

This range of microscopes has cordless LED illumination that provides white light with virtually no heat and a built-in carrying handle. Choose among our models the one that fits your application best: monocular or binocular, with stage clips or with built-in mechanical stage, lead free Achromatic or Semi-Plan objectives or even its digital version, which includes Motic Images Plus 2.0 image analysis software.

ERGONOMIC AND
“STUDENT-PROOF” DESIGN

ENERGY-EFFICIENT, CORDLESS
LED ILLUMINATION

BUILT-IN CARRYING HANDLE

BUILT-IN 3.0 MP CAMERA

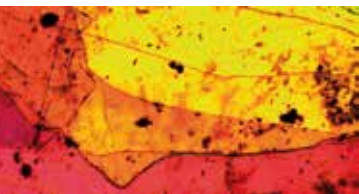
LED BATTERY LEVEL INDICATOR

SWIFT100 SERIES MODELS

SWIFT100 | SWIFT120 | SWIFT120 DIGITAL
SWIFT132



MAIN DIFFERENCES	SWIFT100	SWIFT120	SWIFT120 DIGITAL	SWIFT132
OBSERVATION TUBE				
Monocular	•	•		
Monocular with built-in digital camera			•	
Binocular Siedentopf type				•
STAGE				
Plain stage with "one-touch" sample clips	•			
Coaxial mechanical stage with sample holder		•	•	•



SWIFT100 SERIES

SPECIFICATIONS



Main differences between models

SWIFT100

SWIFT120

SWIFT120 DIG.

SWIFT132

Optical System				
Finite optical system, 160mm	●	●	●	●
Observation Tube				
Monocular	●	●		
Monocular with built-in digital camera			●	
Binocular Siedentopf type				●
Inclination				
30° inclined, 360° rotating	●	●	●	●
Camera Sensor				
CMOS 1/2" - 3MP - 2048 x 1536 pixels			●	
Output				
USB 2.0			●	
Interpupillary distance				
55-75mm				●
Diopter adjustment				
On the left tube, +/- 5 diopter				●
Eyepieces				
WF10X/18mm				●
WF10X/18mm with Pointmaster reticle, lockable	●	●	●	
Nosepiece				
Reversed triple revolving nosepiece with click stops	●			
Reversed quadruple revolving nosepiece with click stops		●	●	●
Achromatic Objectives (DIN) - Lockable				
4X/0.10, 10X/0.25, 40X/0.65/S	●	●	●	
Achromatic Semi-Plan objectives - SP				
4X/0.10, 10X/0.25, 40X/0.65/S, 100X/1.25/S/Oil				●
Stage				
Plain stage with "one-touch" sample clips	●			
Built-in low position coaxial mechanical stage with sample holder		●	●	●
Stage size				
140mm x 120mm	●			
140mm x 140mm		●	●	●
Condenser				
Built-in 0,65 N.A. with iris diaphragm and frosted filter	●			
Spiral mounted 1.25 N.A. Abbe condenser with iris diaphragm		●	●	●
Focus mechanism				
Separated coarse and fine focusing system	●	●	●	
Coaxial coarse and fine focusing system				●
Minimum Fine focus precision				
2 µm	●	●	●	●
Illumination				
Rechargeable LED illumination, 20mA, 3.5V, 70mW with intensity control	●	●	●	●

SWIFT200 SERIES



SWIFT220



SWIFT223



SWIFT200 SERIES

THE SWIFT200 SERIES TARGETS COLLEGE STUDENTS, BUDGET-MINDED VETERINARIES AND LAB-TECHNICIANS

The SWIFT200 Series expands your options. Any of the models that belong to this series are ideal for advanced studies and professional applications. Apart from sharing some of the main features of the SWIFT100, what the SWIFT200 Series offers you is a choice between binocular or trinocular head version with Semi-Plan objectives, quintuple nosepieces and 3W LED illumination.

To turn these models into digital stations featuring the latest technology, make sure to add one of our Tablet solutions to the trinocular port. Our Moticonnect APP, included with our Tablet solutions, allows you to wirelessly share images with others via Bluetooth, Wi-Fi and HDMI connection. In just one tap you will be able to capture high-quality images, measure and edit them as well as record HD videos. Share the microscope experience with others around you and make your microscopy experience unique. All it takes is a touch of your finger!

COAXIAL FOCUSING SYSTEM
FOR PRECISE FOCUSING

ENERGY-EFFICIENT VARIABLE
LED ILLUMINATION

QUINTUPLE NOSEPIECE

SWIFT200 SERIES MODELS
SWIFT220 | SWIFT223



MAIN DIFFERENCES

OBSERVATION TUBE

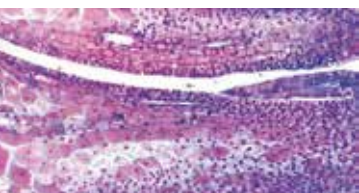
Binocular, Siedentopf type
Trinocular, Siedentopf type

SWIFT220

SWIFT223

•

•



SWIFT200 SERIES

SPECIFICATIONS



SWIFT220

SWIFT223

Main differences between models

Optical System		
Finite optical system, 160mm	●	●
Observation Tube		
Binocular Siedentopf type	●	
Trinocular, Siedentopf type		●
Inclination		
30° inclined	●	●
Interpupillary distance		
55-75mm	●	●
Diopter adjustment		
On the left tube, +/- 5 diopter	●	●
Eyepieces		
WF10X/20mm	●	●
Nosepiece		
Reversed quintuple revolving nosepiece	●	●
Achromatic Semi-Plan objectives - SP		
4X/0.10 (WD 17mm), 10X/0.25 (WD 6.4mm), 40X/0.65/S (WD 0.45mm), 100X/1.25/S/Oil (WD 0.14mm)	●	●
Stage		
Built-in low position coaxial mechanical stage with sample holder	●	●
Stage size		
140mm x 140mm	●	●
Mechanical stage X&Y range		
77mm x 31mm	●	●
Condenser		
Rack and pinion focusable 1.25 N.A. Abbe condenser with iris diaphragm	●	●
Focus mechanism		
Coaxial coarse and fine focusing system with tension adjustment	●	●
Minimum Fine focus precision		
2 µm	●	●
Z-axis movement		
16mm	●	●
Illumination		
LED illumination, 3W with intensity control	●	●

SWIFT30 SERIES



SWIFT30-B



SWIFT30-S



SWIFT39-Z



SWIFT30 SERIES

THE SWIFT30 STEREO MICROSCOPES SERIES IS PERFECT FOR EDUCATIONAL PURPOSES, AS WELL AS AMATEUR MICROSCOPISTS

The SWIFT30 Series of stereo microscopes offers three models from which to choose. The SWIFT30-B features fixed magnifications of 10X and 30X, the SWIFT30-S features fixed magnifications of 20X and 40X and the SWIFT39-Z has a variable zoom magnification range of 10X~30X, offering extra versatility.

All of them are cordless and include energy-efficient variable LED illumination with three illumination systems to choose from (axial, incident and/or transmitted), “one-touch” stage clips, USB 5V output located on the stand and diopter adjustment on the left eyepiece. Its design also includes a built-in carrying handle and a cord-hanger for safe and hassle-free cord storage. Its features make this series ideal for high school classrooms and up.

ENERGY-EFFICIENT VARIABLE
LED ILLUMINATION

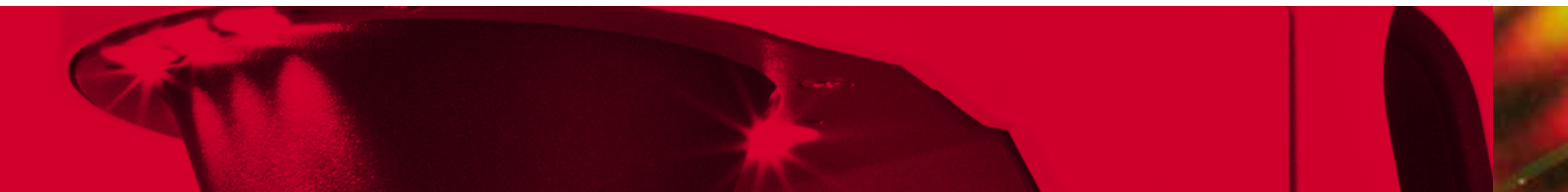
PRACTICAL MAGNIFICATION
CHANGER BY ROTATING KNOB

CHOICE OF FIXED
MAGNIFICATIONS OR ZOOM

“ONE-TOUCH” STAGE CLIPS

SWIFT30 SERIES MODELS

SWIFT30-B | SWIFT30-S | SWIFT39-Z



MAIN DIFFERENCES	SWIFT30-B	SWIFT30-S	SWIFT39-Z
OBJECTIVES SYSTEM			
Turret changer by rotating knob	•	•	
Zoom, ratio 3:1			•
OBJECTIVES MAGNIFICATION			
1X - 3X	•		
2X - 4X		•	
1X ~ 3X zoom			•



SWIFT30 SERIES

SPECIFICATIONS



Main differences between models

SWIFT30-B

SWIFT30-S

SWIFT39-Z

Optical System			
Greenough	●	●	●
Observation Tube			
Binocular	●	●	●
Inclination			
45° inclined, rotating	●	●	●
Interpupillary distance			
49-70mm	●	●	●
Eyepieces			
WF10X/20mm	●	●	●
Diopter adjustment			
On the left eyepiece, +/- 5 diopter	●	●	●
Objectives system			
Turret changer by rotating knob	●	●	
Zoom, ratio 3:1			●
Objectives magnification			
1X - 3X	●		
2X - 4X		●	
1X ~ 3X zoom			●
Working distance			
68mm			●
70mm	●	●	
Stand			
Fixed arm type stand	●	●	●
Base			
284mm x 187mm	●	●	●
Column/Arm			
231mm high	●	●	●
Head holder			
Fixed	●	●	●
Focus mechanism			
Coarse focusing system with tension adjustment	●	●	●
Focusing stroke			
50mm	●	●	●
Incident illumination (Turret and Arm)			
Rechargeable LED 3.5V/150mA with intensity control	●	●	●
Transmitted illumination			
Rechargeable LED 3.5V/150mA with intensity control	●	●	●

SWIFT130X

WI-FI DIGITAL MICROSCOPE

DIGITAL MICROSCOPE WITH
INTEGRATED WI-FI CAMERA OF 1.3MP,
WILL MAKE YOUR LESSONS
INTERACTIVE AND ENJOYABLE



Optical System	Finite optical system, 160mm
Observation tube	Monocular with built-in digital X type Wi-Fi camera
Inclination	30° inclined, 360° rotating
Camera sensor	CMOS 1/3" - 1.3MP - 1280x1024 pixels
Output	Wi-Fi transmission up to 1.3MP
Eyepieces	WF10X/18mm
Nosepiece	Reversed quadruple revolving nosepiece
Objective classification	Semi-Plan, DIN
Objectives	4X/0.10 (WD 17mm), 10X/0.25 (WD 6.4mm), 40X/0.65/S (WD 0.45mm)
Stage	Built-in low position coaxial mechanical stage with sample holder
Stage size	140x140mm
Mechanical stage X&Y range	77x31mm
Condenser	Spiral mounted 1.25 N.A. Abbe condenser with iris diaphragm
Focus mechanism	Coaxial coarse and fine focusing system
Fine Focus precision	2µm minimum increment
Illumination	LED 20mA, 3.5V, 70mW with intensity control
Power supply	Charger 100-240V or rechargeable batteries



SWIFT130-X

MOTICAM SERIES

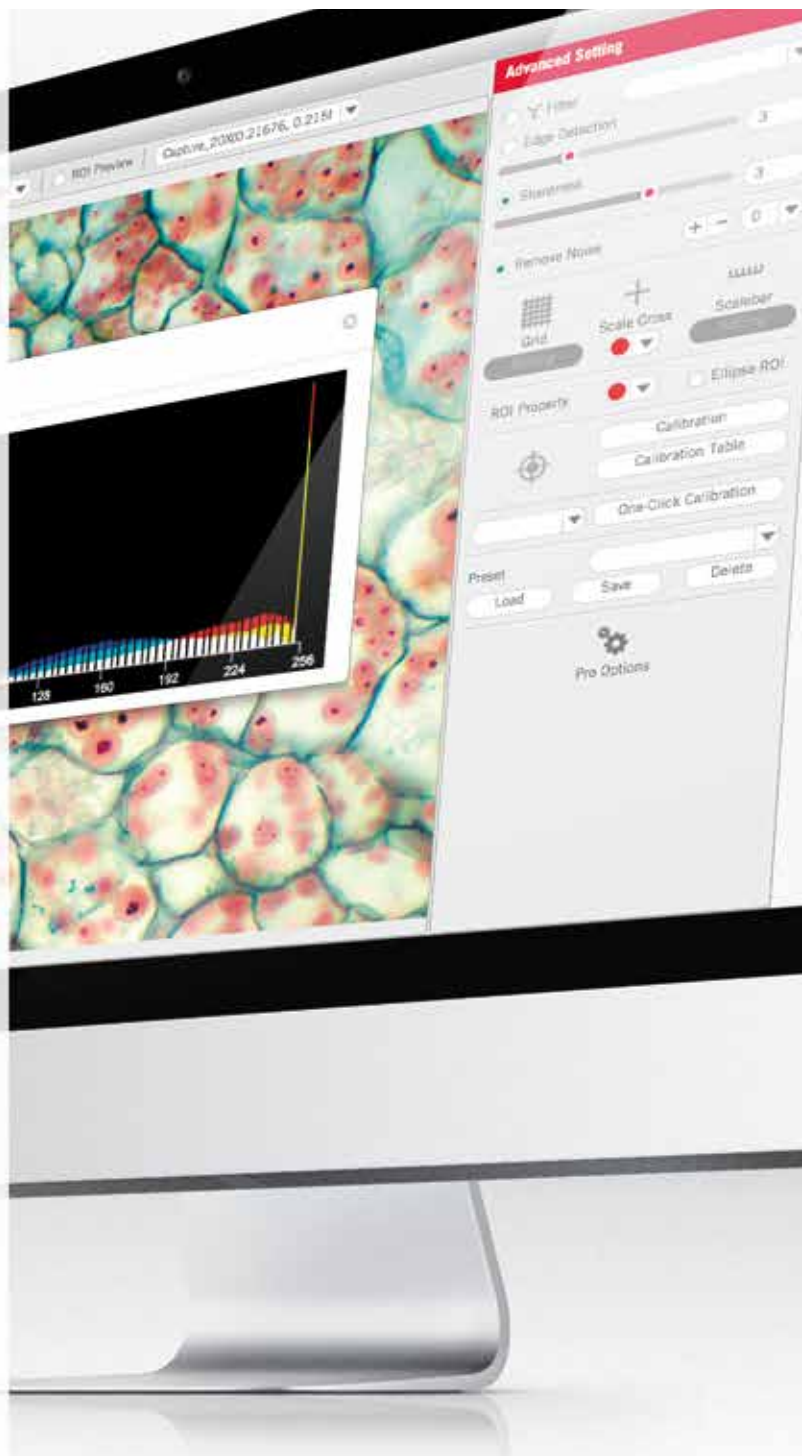
EXCELLENT LIVE IMAGES FOR TEACHING AND CLASSROOM WORK

The individual situation in a classroom may be unique. To share positive image results nevertheless is a common teaching task. The combination of a Swift Line microscope with a member of the Moticam Series enables to display and to share excellent live images for presentations and discussions. The camera package also includes the easy-to-use Motic Images Plus 3.0 software which allows to save still images and to record videos, as well as many other edition options. Living samples thus can be evaluated in an appropriate way.

For a group work approach in classrooms, we have two options with Wi-Fi data transfer that may suit perfectly. The Moticam X, which allows the access of multiple tablets or computers, so one microscope as imaging source is sufficient to feed up to 6 student devices with images for homework; or the Moticam X2 which is the advanced version. The difference is that the Moticam X2 has its own battery, and it allows you to integrate it to your own network either via Wi-Fi or via Ethernet cable, allowing more users to be connected. Capture, edit and share your images with our free App MotiConnect.

Adapting a Moticam to your microscope is quite easy: the eyepiece adapters allow to use even a monocular model as an image source. Trinocular Swift Line microscopes already come with the necessary c-mount adapter for the photo port.

Discover the possibilities and benefits of connecting a Moticam camera onto your Swift Line microscope. Multiply your teaching options, improve teaching efficiency!



Our Moticam selection suitable for you:

Standard Live Resolution

Wi-Fi streaming

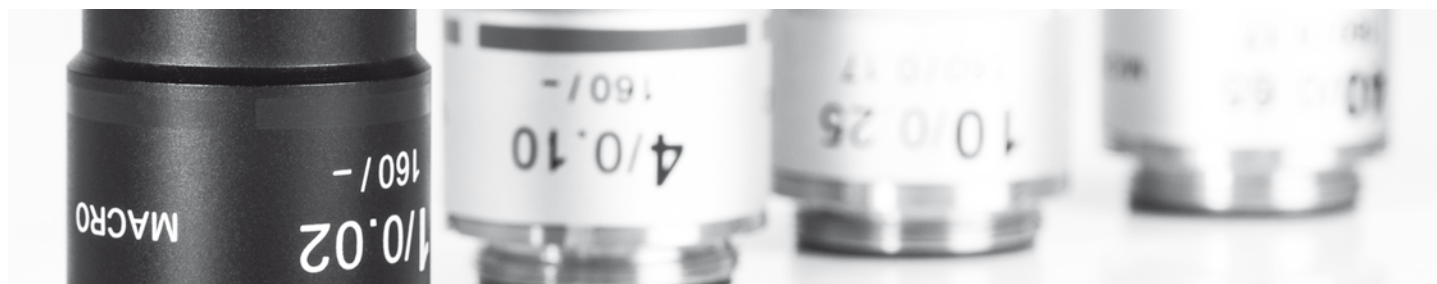
High Definition



SWIFTLINE ACCESSORIES

SWIFT3H SERIES

SWIFT100 SERIES



Eyepieces (per piece)

Huygens eyepiece H5X/14.5mm
Widefield eyepiece CPL WF10X/18mm
Widefield eyepiece WF15X/12mm
Widefield eyepiece WF20X/11mm

Micrometer eyepieces (per piece)

Micrometer eyepiece WF10X/18mm, 100 divisions in 10mm and crosshair

Reticles

Reticle with 100 divisions in 10mm and crosshair (Ø19mm)
Reticle holder for 18mm eyepiece

Achromatic objectives, lockable

Macro objective 1X
Macro objective 2X
Achromatic objective 4X/0.10
Achromatic objective 10X/0.25
Achromatic objective 40X/0.65/S

Spare parts

Dust cover
Cleaning kit
Lens tissue paper
Motic slides 76x25mm
Motic coverslips 22x22mm

Spare bulbs

LED 20mA, 3.5V, 70mW for top light
LED Assembly bottom light

Eyepieces (per piece)

Huygens eyepiece H5X/14.5mm
Widefield eyepiece CPL WF10X/18mm
Widefield eyepiece WF10X/18mm with POINTMASTER® eyepiece reticle
Widefield eyepiece WF15X/12mm
Widefield eyepiece WF20X/11mm

Reticles

Reticle with 100 divisions in 10mm and crosshair (Ø19mm)
Reticle holder for 18mm eyepiece

Achromatic objectives, lockable

Achromatic objective 4X/0.10
Achromatic objective 10X/0.25
Achromatic objective 40X/0.65/S
Achromatic objective 100X/1.25/S - Oil

Achromatic Semi-Plan objectives - SP

Achromatic Semi-Plan objective SP 4X/0.10 (WD=17mm)
Achromatic Semi-Plan objective SP 10X/0.25 (WD=6.4mm)
Achromatic Semi-Plan objective SP 20X/0.40 (WD=0.73mm)
Achromatic Semi-Plan objective SP 40X/0.65/S (WD=0.45mm)
Achromatic Semi-Plan objective SP 60X/0.85/S (WD=0.1mm)
Achromatic Semi-Plan objective SP 100X/1.25/S-Oil (WD=0.14mm)

Spare parts

Dust cover
Immersion oil 5ml
Cleaning kit
Lens tissue paper
Motic slides 76x25mm
Motic coverslips 22x22mm

Spare bulbs

LED 20mA, 3.5V, 70mW

SWIFTLINE ACCESSORIES

SWIFT200 SERIES

SWIFT30 SERIES



Eyepieces (per piece)

Huygens eyepiece H5X/14.5mm
Widefield eyepiece WF10X/20mm
Widefield eyepiece WF15X/12mm
Widefield eyepiece WF20X/11mm

Reticles

Reticle with 100 divisions in 10mm and crosshair (Ø21mm)
Reticle holder for 20mm eyepiece

Achromatic Semi-Plan objectives - SP

Achromatic Semi-Plan objective SP 4X/0.10 (WD=17mm)
Achromatic Semi-Plan objective SP 10X/0.25 (WD=6.4mm)
Achromatic Semi-Plan objective SP 20X/0.40 (WD=0.73mm)
Achromatic Semi-Plan objective SP 40X/0.65/S (WD=0.45mm)
Achromatic Semi-Plan objective SP 60X/0.85/S (WD=0.1mm)
Achromatic Semi-Plan objective SP 100X/1.25/S-Oil (WD=0.14mm)

Plan achromatic objectives - PL

Plan achromatic objective PL 4X/0.10 (WD=17mm)
Plan achromatic objective PL 10X/0.25 (WD=1.5mm)
Plan achromatic objective PL 20X/0.40 (WD=0.55mm)
Plan achromatic objective PL 40X/0.65/S (WD=0.4mm)
Plan achromatic objective PL 60X/0.85/S (WD=0.1mm)
Plan achromatic objective PL 100X/1.25/S - Oil (WD=0.15mm)

Photo and C-mount camera adapters

0.5X C-mount camera adapter for 1/3" and 1/2" chip sensors
0.65X C-mount camera adapter for 2/3" chip sensors
1X C-mount camera adapter (no lens)
Photo adapter (requires one of the photo eyepieces below)
2.5X photo eyepiece (to be used with Photo adapter)
4X photo eyepiece (to be used with Photo adapter)

Spare parts

Eyecup
Dust cover (size C)
Immersion oil 5ml
Cleaning kit
Lens tissue paper
Motic slides 76x25mm
Motic coverslips 22x22mm

Spare bulbs

LED light assembly 3W

Eyepieces (per piece)

Widefield eyepiece WF10X/20mm adjustable
Widefield eyepiece WF10X/20mm non-adjustable

Reticles

Reticle with crosshair (Ø25mm)
Reticle with 100 divisions in 10mm (Ø25mm)
Reticle with crossed double scale 100 divisions in 10mm (Ø25mm)
Reticle with crossed double scale 100 divisions in 10mm and crosshair (Ø25mm)
Reticle with 360° protractor with 1° divisions and crosshair (Ø25mm)
Reticle with 360° protractor with 10° divisions and crosshair (Ø25mm)

Spare parts

White stage plate, Ø 80mm
Black stage plate, Ø 80mm
Frosted stage plate, Ø 80mm
Dust cover (size C)
Eyecups (pair)
Cleaning kit
Lens tissue paper

Spare bulbs

LED Assembly top light
LED Assembly bottom light



Canada | China | Germany | Spain | USA



www.moticeurope.com

EN | ES | FR | DE | IT | PT

Motic Instruments (Canada)

130 - 4611 Viking Way. Richmond, BC V6V 2K9 Canada
Tel: 1-877-977 4717 | Fax: 1-604-303 9043

Motic Deutschland (Germany)

Christian-Kremp-Strasse 11, D-35578 Wetzlar, Germany
Tel: 49-6441-210 010 Fax: 49-6441-210 0122

Motic Hong Kong (Hong Kong)

Unit 2002, L20, Tower Two, Enterprise Square Five
38, Wang Chiu Road, Kowloon Bay, Kowloon, Hong Kong
Tel: 852-2837 0888 | Fax: 852-2882 2792

Motic Europe (Spain)

C. Les Corts 12, Pol. Ind. Les Corts. 08349 Cabrera de Mar, Barcelona, Spain
Tel: 34 93 756 62 86 | Fax: 34 93 756 62 87

*CCIS® is a trademark of Motic Incorporation Ltd.

Motic Incorporation Limited Copyright © 2002-2017. All Rights Reserved.

Design Change: The manufacturer reserves the right to make changes in instrument design in accordance with scientific and mechanical progress, without notice and without obligation.

Designed in Barcelona (Spain)

Updated: February 2017



Official Distributor: